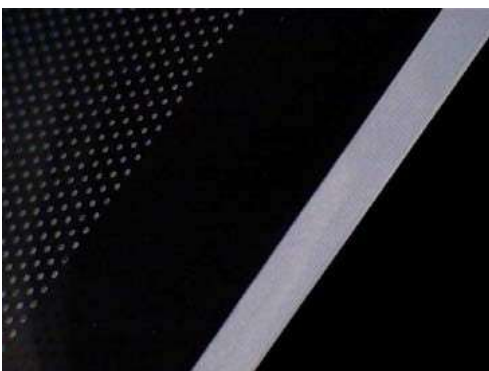


TCP EE, Edge Embossing – In the process of development

TCP EE Edge Embossing, place any pattern on the edge.
V-cut, Micro lenses, Fresnel lenses or just a blank surface are all possible to produce in TCP EE. All with 100% replication and just a few seconds for each Light Guide Plate.
If protection film is used on flat surface, it can stay on during the process or for use on a TCP 1000 for next step protection film can be excluded.

Process time: Below 60 s (50 pieces) Capacity:
100 mm (Stacked 50 piece 2,0mm) Max
embossing width: 600 mm
Quality grade Super
Thickness 0.25 - 50 mm
Inlet lenses: V-cut, Micro lenses, Fresnel and blank surface
Footprint: 1000x850 mm



TECHNICAL DESCRIPTION TCP EE

Servo Electric press and control unit 300

kN Footprint: 1000x 850 mm

Height: 970 mm

Weight: 1000 kg

Servo Electric: 4 pieces 750 W

Advanced speed: 20 mm/sec

Power unit up to 30 kW

Footprint: Included in cabinet



Production room requirement

Production room: For optical parts clean room Class 1000 or better.

Temperature: 20 – 27°C ± 2°C (at chosen temperature) **Relative humidity:** 30–60%, ± 5% (at chosen humidity) **Electrics:** 3-phase 400 VAC, 63A per phase fuse

Expected average power consumption: 5 kW - average per cycle 0,2 kW/h

The following utilities are required for the operation of TCP EE

Electrical Connection: 3-phase 400 VAC, 63A per phase fuse, 50 or 60 Hz **Compressed air:** Oil free, 6 - 8 bar, 100 l/min, dew point <3°C.

Vacuum: Minimum 50 l/min, final pressure lower than 10 Pa

Cooling water: 16 – 23°C, 50 l/min. >1.5 bar differential (output-input)

TC TECH Sweden AB

TC TECH, founded in 2011, is listed at Nasdaq First North Stock Exchange in Stockholm Sweden. Majority owner is Cimon group, a privately held industrial conglomerate.

Karlshamn, Head office
Pirgatan 13, SE-374 35 Karlshamn
Phone: +4608 – 788 08 00
E-mail: info@tctech.se
www.tctech.se

Stockholm, Sales, R & D and Operations
Domnarvsgatan 4, SE-163 53 Spånga
Phone: +4608 – 788 08 00