

TCP 150 HPE, High Performance Electric

High efficient production of up to 15" Light Guide Plate or similar size. With a possible cycle time below 25 sec*) and a footprint of 1 m², this system provides a high efficient solution, ready to be placed in a clean room direct in production line. The technology is based on the Flux Gear™ system as every TC TECH system. Together with the Cold Frame Feature™ and D-HYPE™ it is possible to have full control over the cycle and get perfect parts continuously. Startup time is almost zero, first cycle gives the same result as after hours of production and a change of product size only takes a few minutes.

Product Data:

Cycle time down to 25 s*)

Quality grade Super > 95%

Thickness < 0,15 mm

No upper limit for thickness

Double sided pattern

Quality area 360x220 mm

Footprint: 1000 x 1000 mm

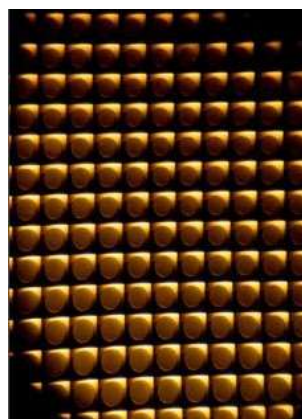
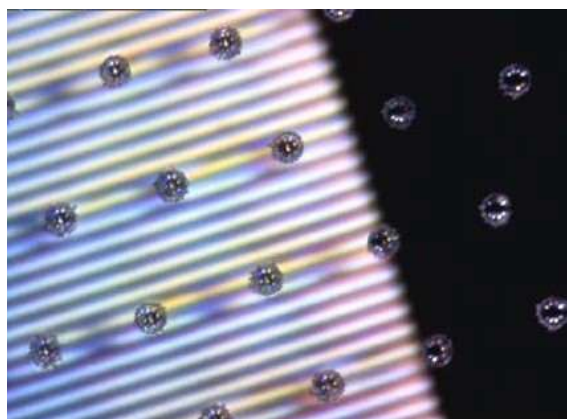
*) Heating, cooling time, and handling included, depending also on pattern depth, material in substrate and stamper quality.

High Performance system

- Double sided pattern
- Thickness down to < 0,15 mm
- Flexible, single or multi-cavity
- Cold frame feature 1,0 mm

Add-on

Roll to Sheet



TECHNICAL DESCRIPTION TCP 150 HPE

Servo Electric press and control unit

Max press force: 750 kN

Footprint: 1000 x 1000 mm

Height: 2500 mm

Weight: 1 400 kg

Stamper size: 420x310 mm

To be defined after receiving drawings.

Estimated cycle time for LGP 15" <25 sec.

Heating and cooling time, and handling, depending on pattern deep, material in substrate and stamper quality.

Power unit 60 kW

Footprint: 600 x 500 mm

Height: 2000 mm

Weight: 60 kg

Clean-room, air supply, vacuum etc. is not included in this footprint estimate

Production room requirement

Production room:

Depends on the product requirement, for optical parts cleanroom Class 1000 or better is suggested.

Temperature: 20 – 27°C ± 2°C (at chosen temperature)

Relative humidity: 30–60%, ± 5% (at chosen humidity)

Electrics: 3-phase 400 VAC, 63A per phase fuse

Expected average power consumption: 15 kW - average per cycle 0,2 kWh

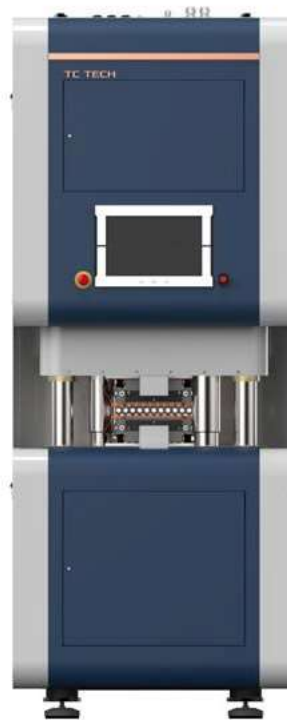
The following utilities are required for the operation of TCP 150 HPE

Electrical Connection: 3-phase 400 VAC, 63A per phase fuse, 50 or 60 Hz

Cooling water: 100l/min, above 15 °C

Compressed air: Oil free, 6 - 8 bar, 1 000 l/min, dew point <3°C

Vacuum: Minimum 50 l/min, final pressure lower than 10 Pa



TC TECH Sweden AB

TC TECH, founded in 2011, is listed at Nasdaq First North Stock Exchange in Stockholm Sweden. Majority owner is Cimon group, a privately held industrial conglomerate.

Karlshamn, Head office

Pirgatan 13, SE-374 35 Karlshamn

Phone: +4608 – 788 08 00

E-mail: info@tctech.se

www.tctech.se

Stockholm, Sales, R & D and Operations

Domnarvsgatan 4, SE-163 53 Spånga

Phone: +4608 – 788 08 00