

## TCP 1000 HP, High Performance

TCP 1000 HP with unlimited pattern possibilities. V-cut, Micro lenses, Fresnel lenses are all possible to produce in TCP 1000 HP. All with 100% replication and down to 0,25 mm in thickness. Double sided pattern at the same time as one sided, and with same quality. This is the system with future secured capability. Combined with TCP EE Edge Embossing, the Light Guide Plate will be high efficiency from all perspectives.

### Product Data:

Process time\*) down to 25 s

Quality grade Super

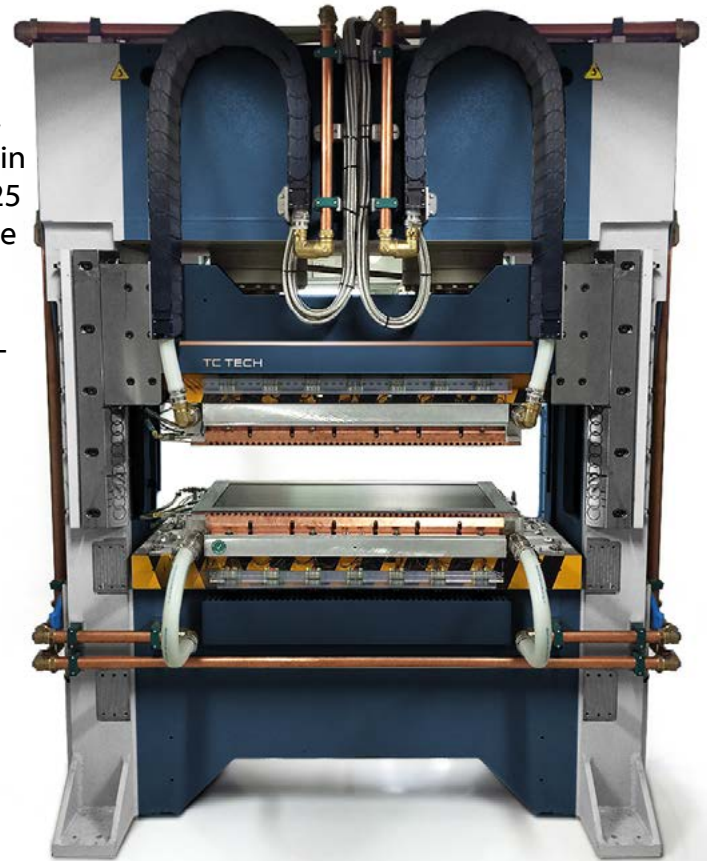
Thickness 0,25 - 30 mm

Double sided pattern

Max heating area 42" base tool: 950x540 mm

Roll to roll option

\*)Heating and cooling time, handling excluded



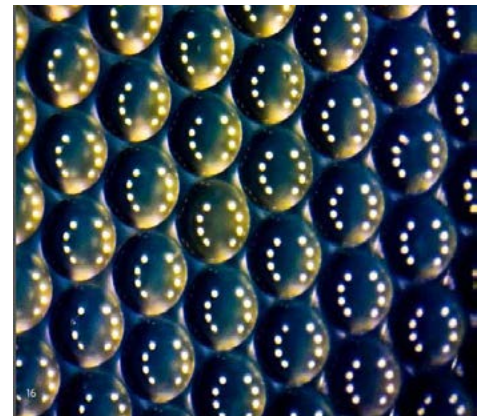
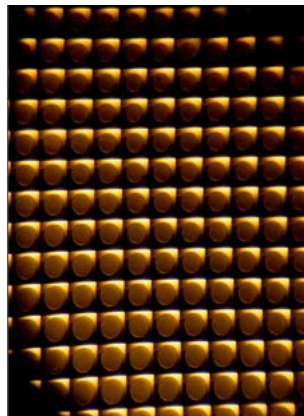
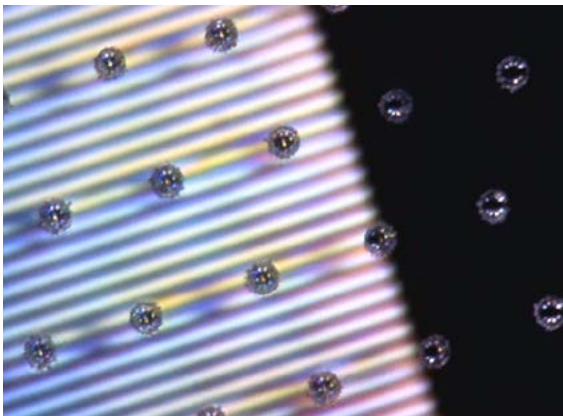
### High Performance system

- Doublesided pattern
- Thickness down to 0,25 mm
- Single cavity
- Cold frame feature 1,0 mm
- Multicavity

### Add-on

Semi automation - automatic loading from stack - manual unloading

Roll to Roll



## TECHNICAL DESCRIPTION TCP 1000 HP

### Hydraulic press and control unit 2250 kN

**Footprint:** 2050x1200 mm

**Height:** 2870 mm

**Weight:** 10 150 kg (including oil tank)

**Advanced speed:** 54 mm/sec

**Working speed:** 18 mm/s

**High Speed:** 100 mm/s

**Hydraulic Oil tank:** 200 l

**Footprint Oil tank:** 2000x120 mm

**Height Oil tank:** 2000 mm

### Power unit up to 540 kW and Auxillary

**Footprint:** 2400 x 400 mm (x3 units)

**Height:** 2000 mm

**Weight:** 400 kg (x3 units)

Clean-room, robots, air supply, vacuum etc. is not included in this footprint estimate



### Production room requirement

**Production room:** For optical parts cleanroom Class 1000 or better.

Minimum 3200 mm ceiling height required

**Temperature:** 20 – 27°C ± 2°C (at chosen temperature)

**Relative humidity:** 30–60%, ± 5% (at chosen humidity)

**Electrics:** 3-phase 400 VAC, 400A per phase fuse

**Expected average power consumption:** 50 kW - average per cycle 1,5 kW/h

### The following utilities are required for the operation of TCP 1000

**Electrical Connection:** 3-phase 400 VAC, 400A per phase fuse, 50 or 60 Hz

**Compressed air:** Oil free, 6 - 8 bar, 100 l/min, dew point <3°C.

**Vacuum:** Minimum 200 l/min, final pressure lower than 10 Pa

**Cooling water:** 16 – 23°C, 220 l/min. >1.5 bar differential (output-input)

#### TC TECH Sweden AB

TC TECH, founded in 2011, is listed at Nasdaq First North Stock Exchange in Stockholm Sweden. Majority owner is Cimon group, a privately held industrial conglomerate.

Karlshamn, Head office

Pirgatan 13, SE-374 35 Karlshamn

Phone: +46454 755 000

E-mail: info@tctech.se

www.tctech.se

Stockholm, Sales, R & D and Operations

Domnarvsgatan 4, SE-163 53 Spånga

Phone: +4644 24 00 30