

## TCP 1000 HP, High Performance

TCP 1000 HP with unlimited pattern possibilities. V-cut, Micro lenses, Fresnel lenses are all possible to produce in TCP 1000 HP. All with higher than 95% replication and down to below 0,15 mm in thickness. Double sided pattern at the same time as one sided, and with same quality. This is the system with future secured capability.

### Product Data:

Cycle time down to below 25 s

Quality grade Super

Substrate thickness <0,15 mm

No upper limit for thickness

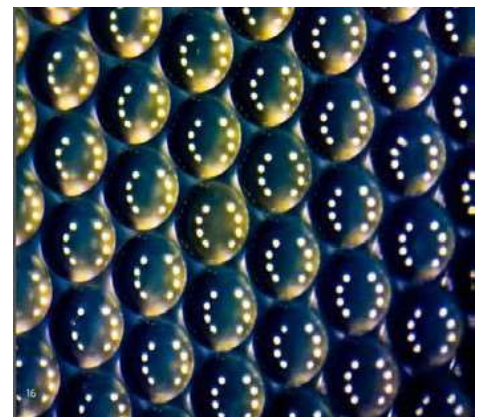
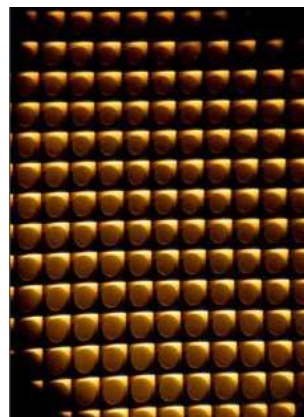
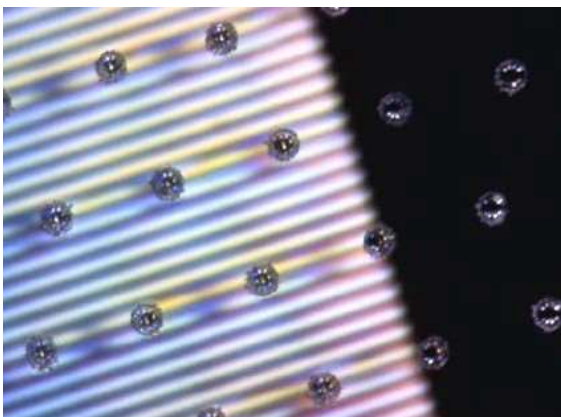
Double sided pattern

Quality area 42" base tool: 900x500 mm

\*) Heating and cooling time, and handling included

### High Performance system

- Double sided pattern
- Thickness < 0,15 mm
- Cold frame feature 1,0 mm
- Flexible single or multi-cavities



## TECHNICAL DESCRIPTION TCP 1000 HP

### Hydraulic press and control unit

**Max press force:** 2250 kN

**Footprint:** 2050x1200 mm

**Height:** 2870 mm

**Weight:** 10 150 kg (including oil tank)

**Hydraulic Oil tank:** 800 l

**Footprint Oil tank:** 2000x120 mm

**Height Oil tank:** 2000 mm

### Power unit up to 540 kW and Auxillary

**Footprint:** 1200 x 500 mm (x3 units)

**Height:** 2000 mm

**Weight:** 400 kg (x3 units)

Clean-room, air supply, vacuum etc. is not included in this footprint estimate

### Production room requirement

#### Production room:

Depends on the products, for optical parts, cleanroom Class 1000 or better is suggested. Minimum 3200 mm ceiling height required

**Temperature:** 20 – 27°C ± 2°C (at chosen temperature)

**Relative humidity:** 30–60%, ± 5% (at chosen humidity)

**Electrics:** 3-phase 400 VAC, 400A per phase fuse

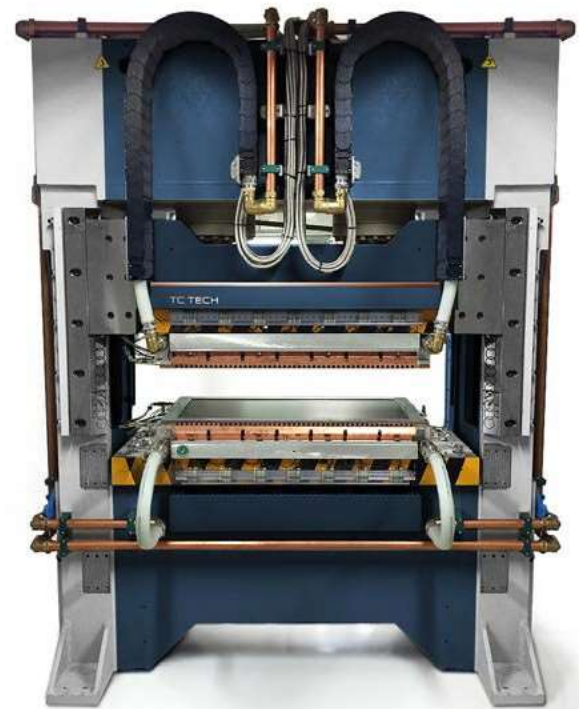
**Expected average power consumption:** 50 kW - average per cycle 1,5 kW/h

### The following utilities are required for the operation of TCP 1000 Electrical

**Connection:** 3-phase 400 VAC, 400A per phase fuse, 50 or 60 Hz **Compressed air:** Oil free, 6 - 8 bar, 100 l/min, dew point <3°C.

**Vacuum:** Minimum 200 l/min, final pressure lower than 10 Pa

**Cooling water:** 16 – 23°C, 220 l/min. >1.5 bar differential (output-input)



### TC TECH Sweden AB

TC TECH, founded in 2011, is listed at Nasdaq First North Stock Exchange in Stockholm Sweden. Majority owner is Cimon group, a privately held industrial conglomerate.

Karlshamn, Head office

Pirgatan 13, SE-374 35 Karlshamn

Phone: +4608 – 788 08 00

E-mail: [info@tctech.se](mailto:info@tctech.se)

[www.tctech.se](http://www.tctech.se)

Stockholm, Sales, R & D and Operations

Domnarvsgatan 4, SE-163 53 Spånga

Phone: +4608 – 788 08 00